

# ORGANIZATIONAL MODEL

## FUNNEL/TARGET WITH DIVISIONS

CENTERED ON A CLEAR PURPOSE

DESIGNED AROUND THE RESURRECTION EXPERIENCE

BROUGHT TO LIFE BY MINISTRY PROGRAMS

ENCOUNTERED AT A LOCATION, ONLINE AND IN-PERSON

SUPPORTED BY **BUSINESS OPERATIONS** AND **DONOR DEVELOPMENT**



# EXECUTIVE LEADERSHIP TEAM

Senior Pastor  
**ADAM HAMILTON**

Senior Executive Director & COO  
**DAN ENTWISTLE**

Executive Director of Business Operations & CFO  
**RACHEL SVATY**

Executive Director of Resurrection Experience  
**CHRIS FOLMSBEE**

Executive Director of Ministries & Programs  
**SCOTT CHROSTEK**

Executive Director of Locations & Care  
**ANNE GATOBU**

Executive Director of Development  
**DEBI NIXON**

- Finance
- HR
- IT
- Facilities
- Safety, Compliance & Risk Management
- Learning Centers

- RX Definition
- Guest Experience Standards
- Metrics & Data Insights
- Marketing
- Communication & PR
- Creative Content & Tech Production
- Events Management & Sharechurch

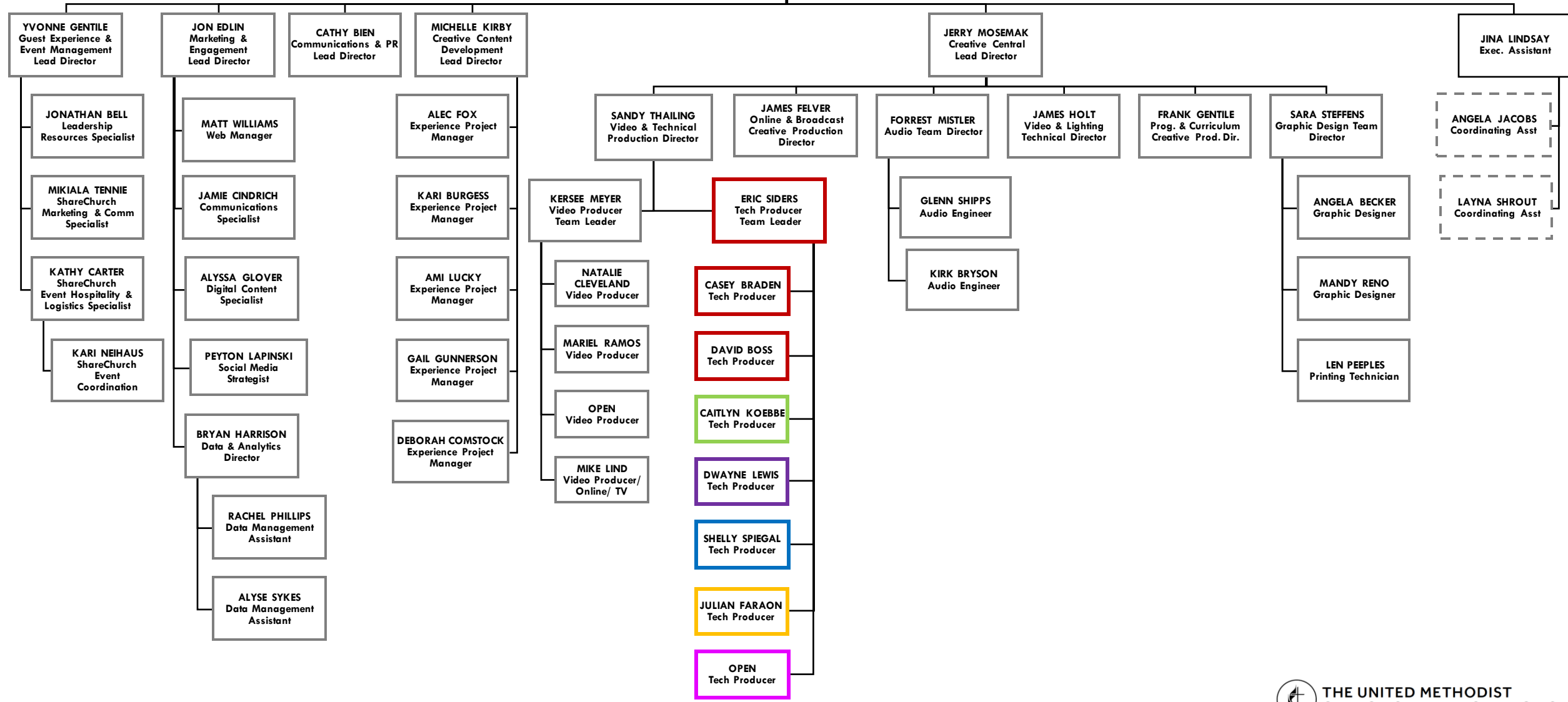
- KiDSCOR, Rez Life, Discipleship, Worship & Missions
- Ministry Standards & Playbooks
- Ministry Strategic Roadmaps
- Program Design & Planning
- Ministry & Program Metrics
- Implementation of programs across all locations

- Community Outreach
- Congregant Involvement
- Building of Christian Community
- Joining and Connections
- Donor Relations
- Pastoral Care
- Centralized Care for Congregants

- Donor Development
- Capital Campaigns
- Stewardship Campaigns
- Foundation & Legacy gifts

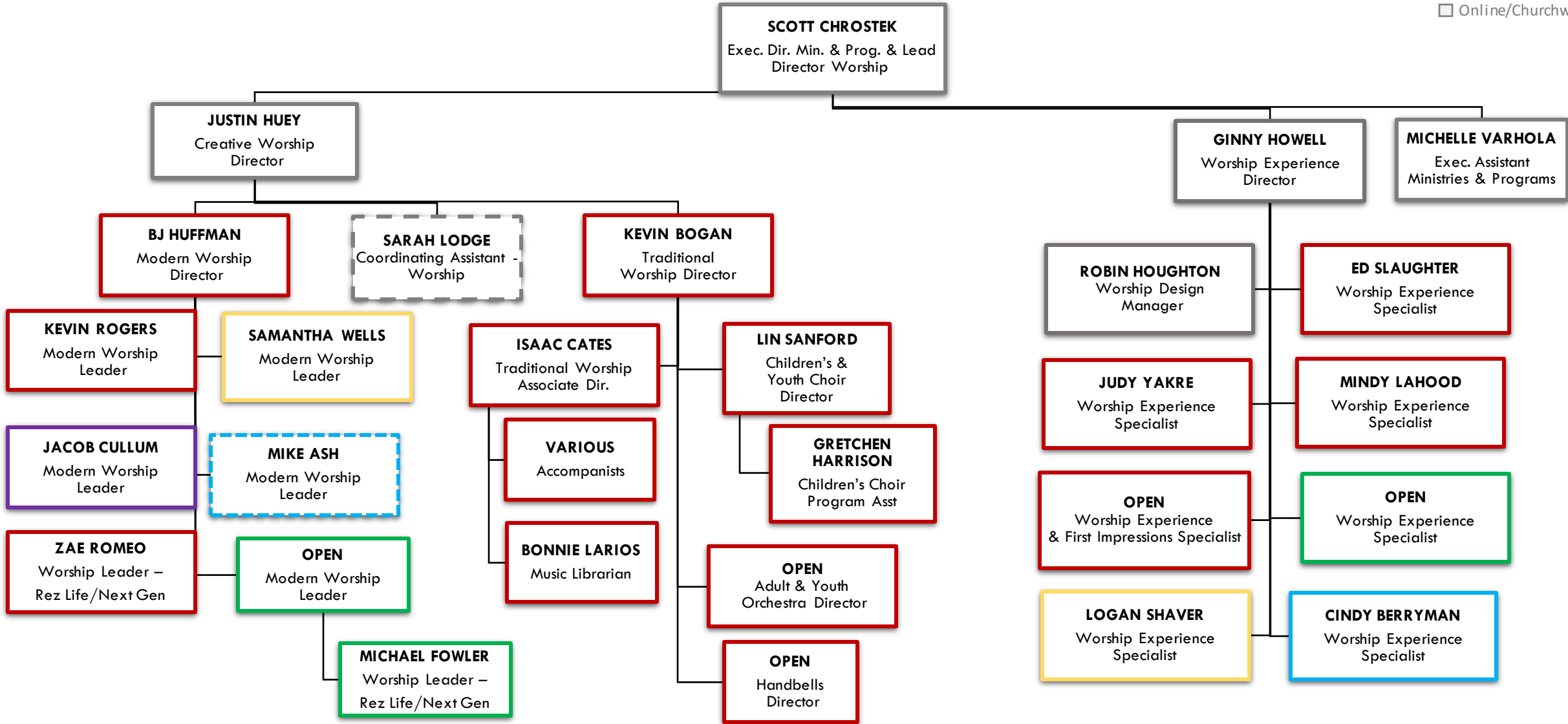
# RESURRECTION EXPERIENCE DIVISION

- Leewood
- West
- Downtown
- Blue Springs
- Overland Park
- Online/Churchwide



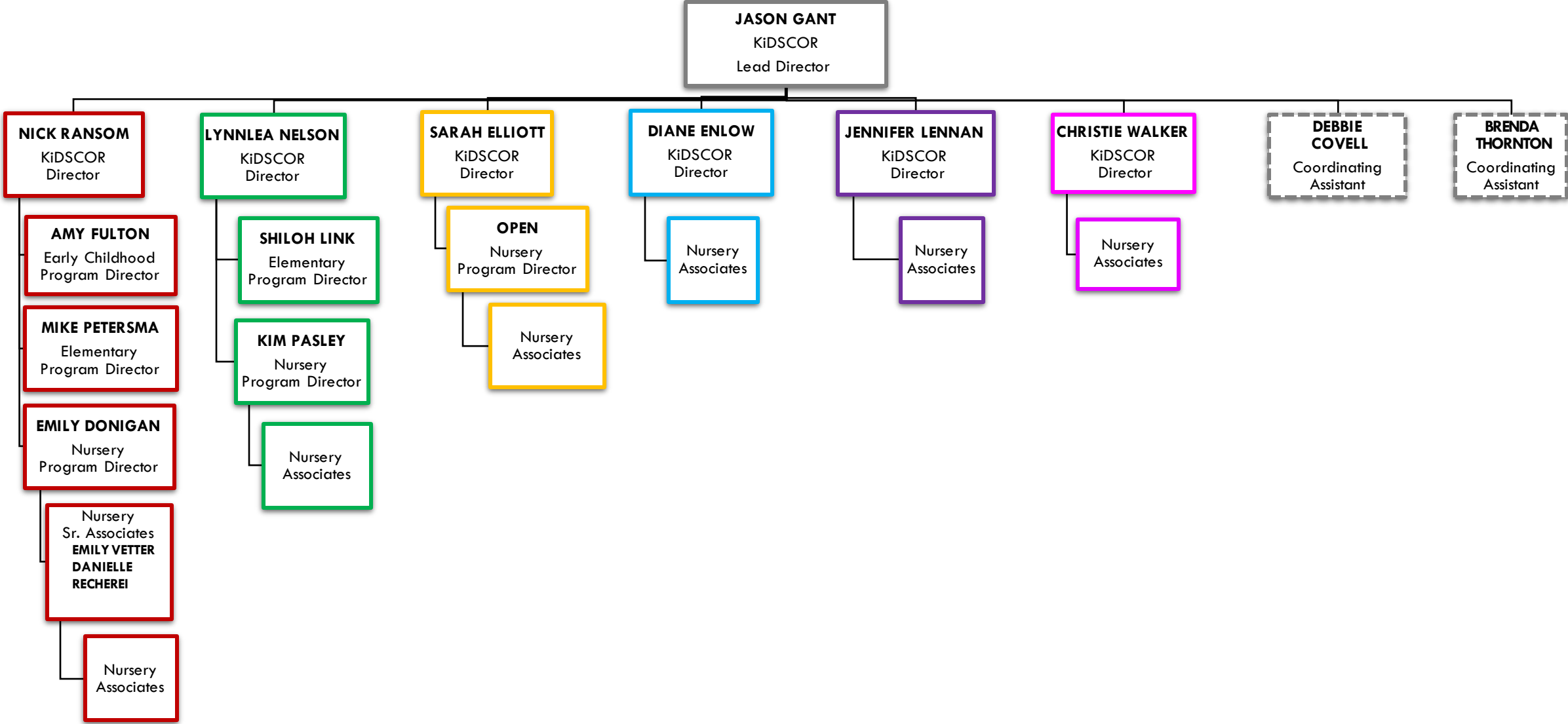
# WORSHIP MINISTRIES

- Leawood
- West
- Downtown
- BlueSprings
- Overland Park
- Online/Churchwide



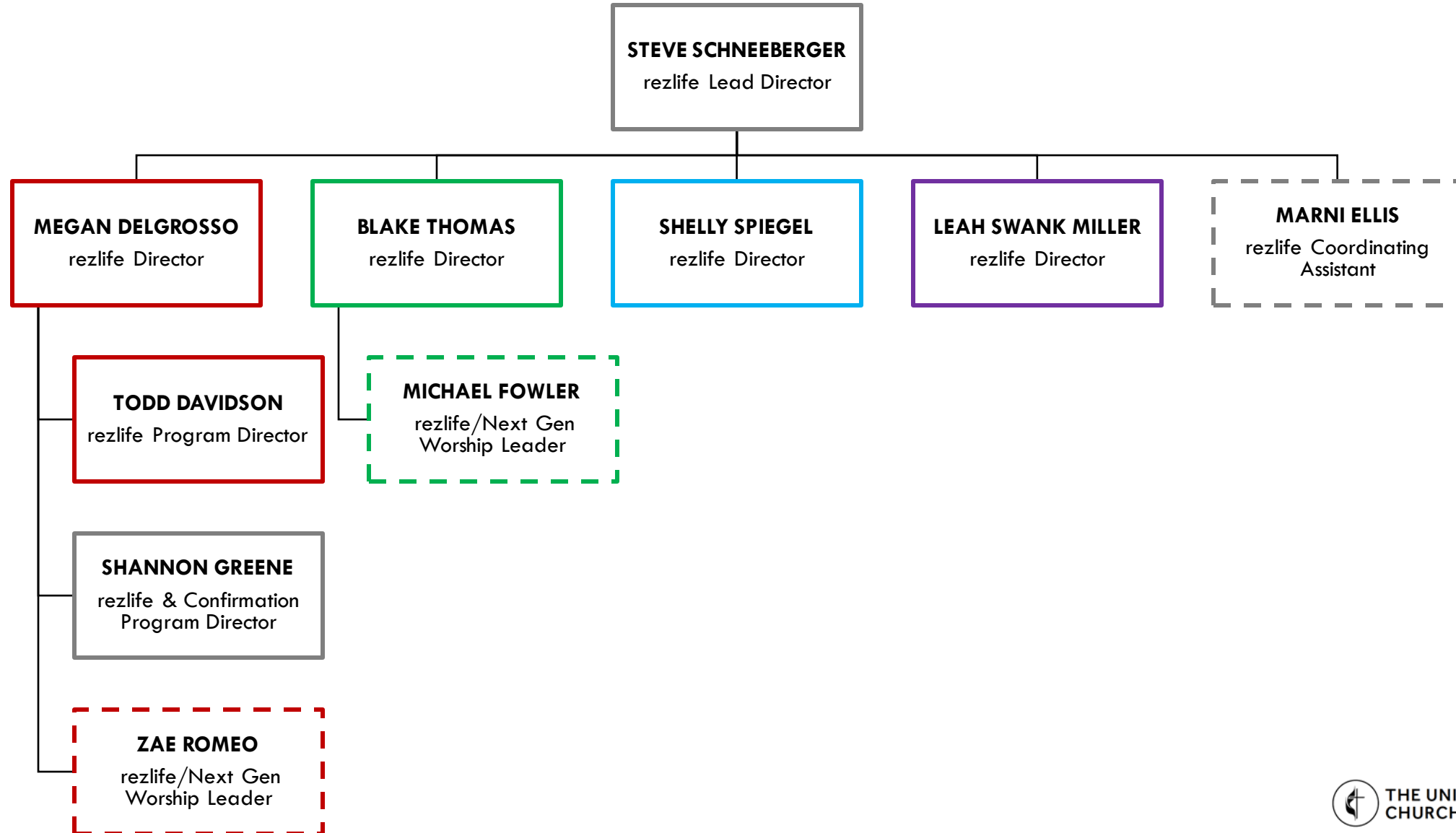
# KiDSCOR CHILDREN'S MINISTRIES

- Leawood
- West
- Downtown
- Blue Springs
- Overland Park
- Online/Churchwide



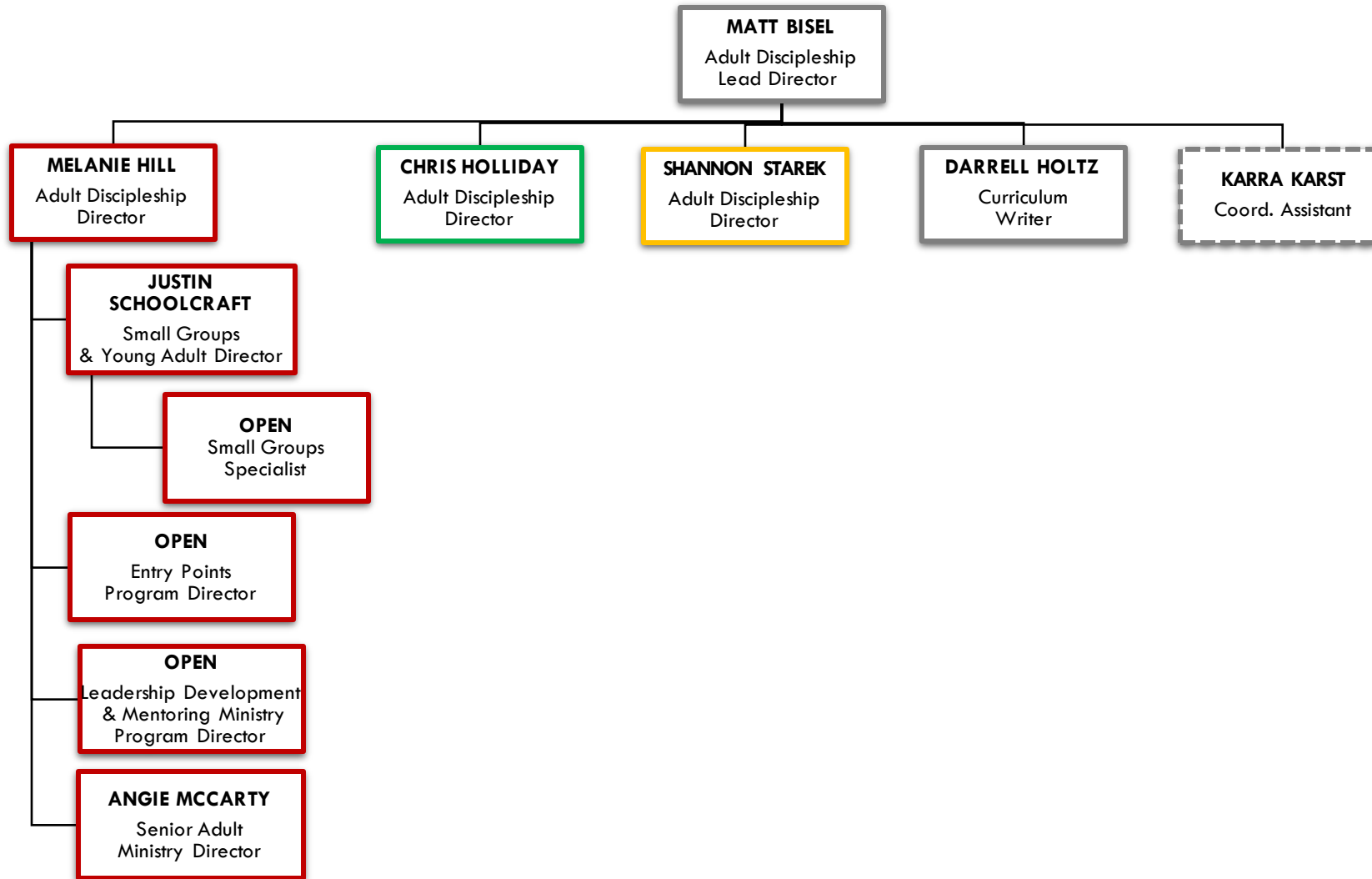
# REZLIFE STUDENT MINISTRIES

- Leewood
- West
- Downtown
- Blue Springs
- Overland Park
- Online/Churchwide



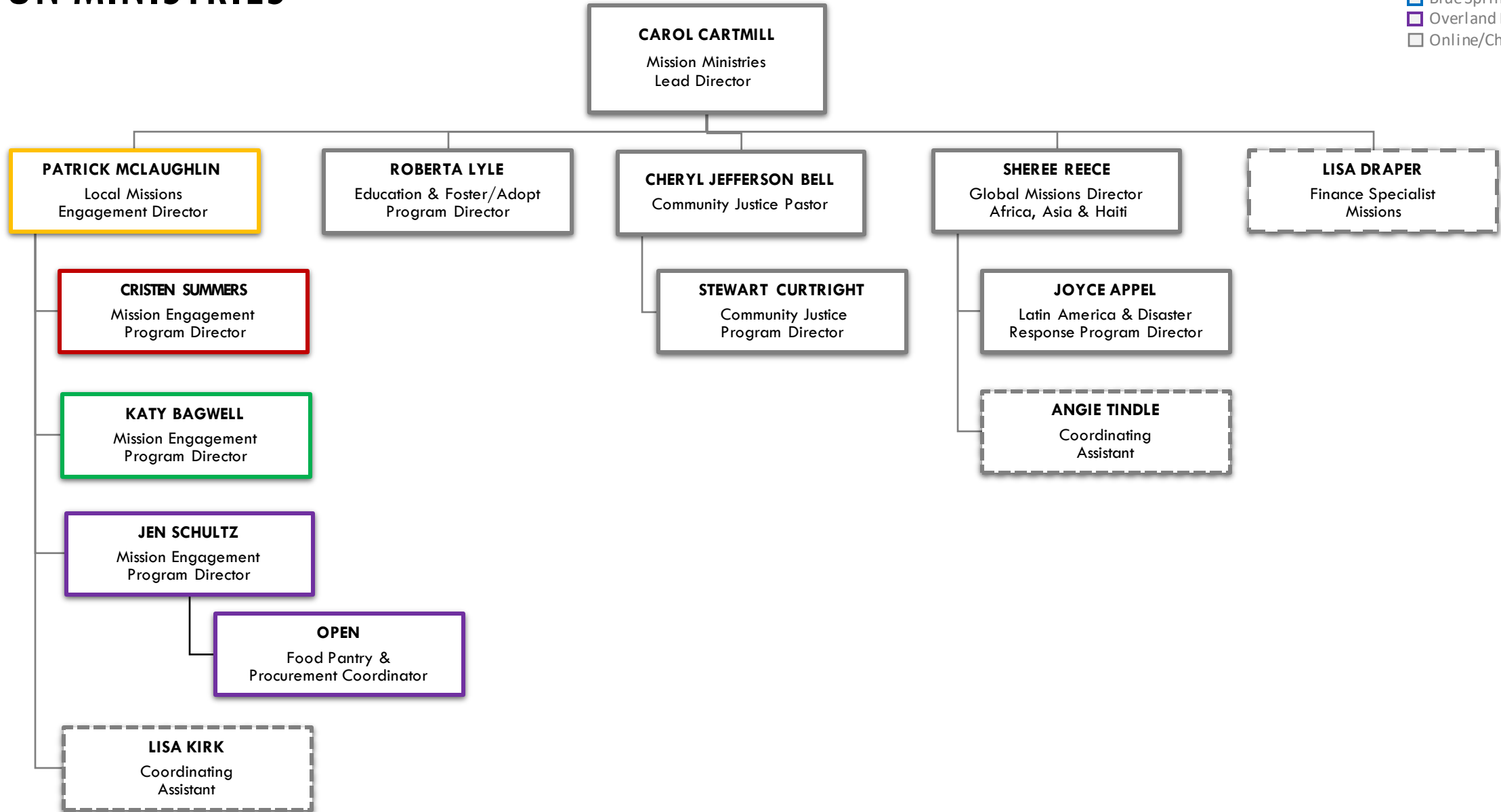
# ADULT DISCIPLESHIP MINISTRIES

- Leawood
- West
- Downtown
- Blue Springs
- Overland Park
- Online/Churchwide



# MISSION MINISTRIES

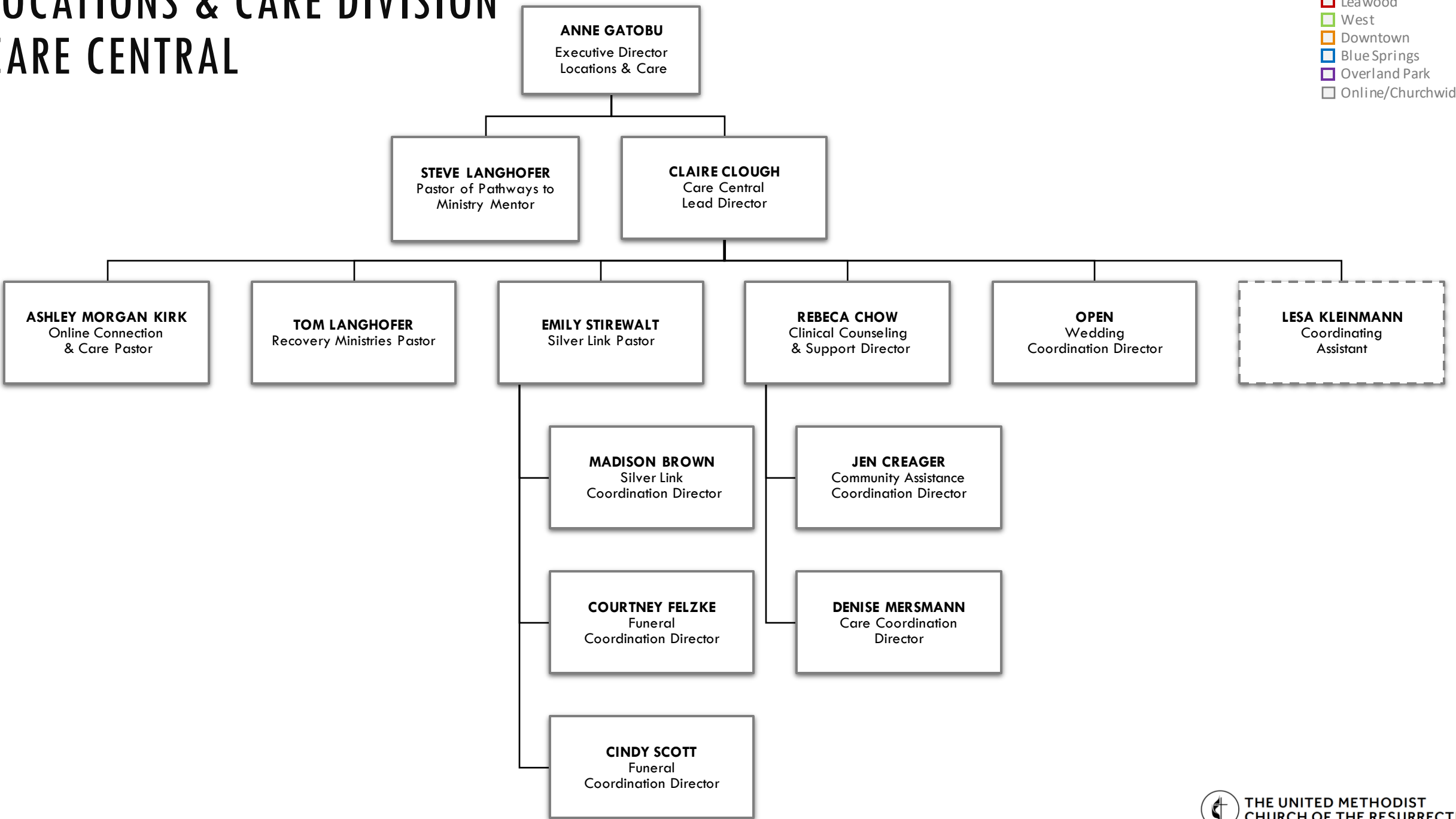
- Leawood
- West
- Downtown
- BlueSprings
- Overland Park
- Online/Churchwide





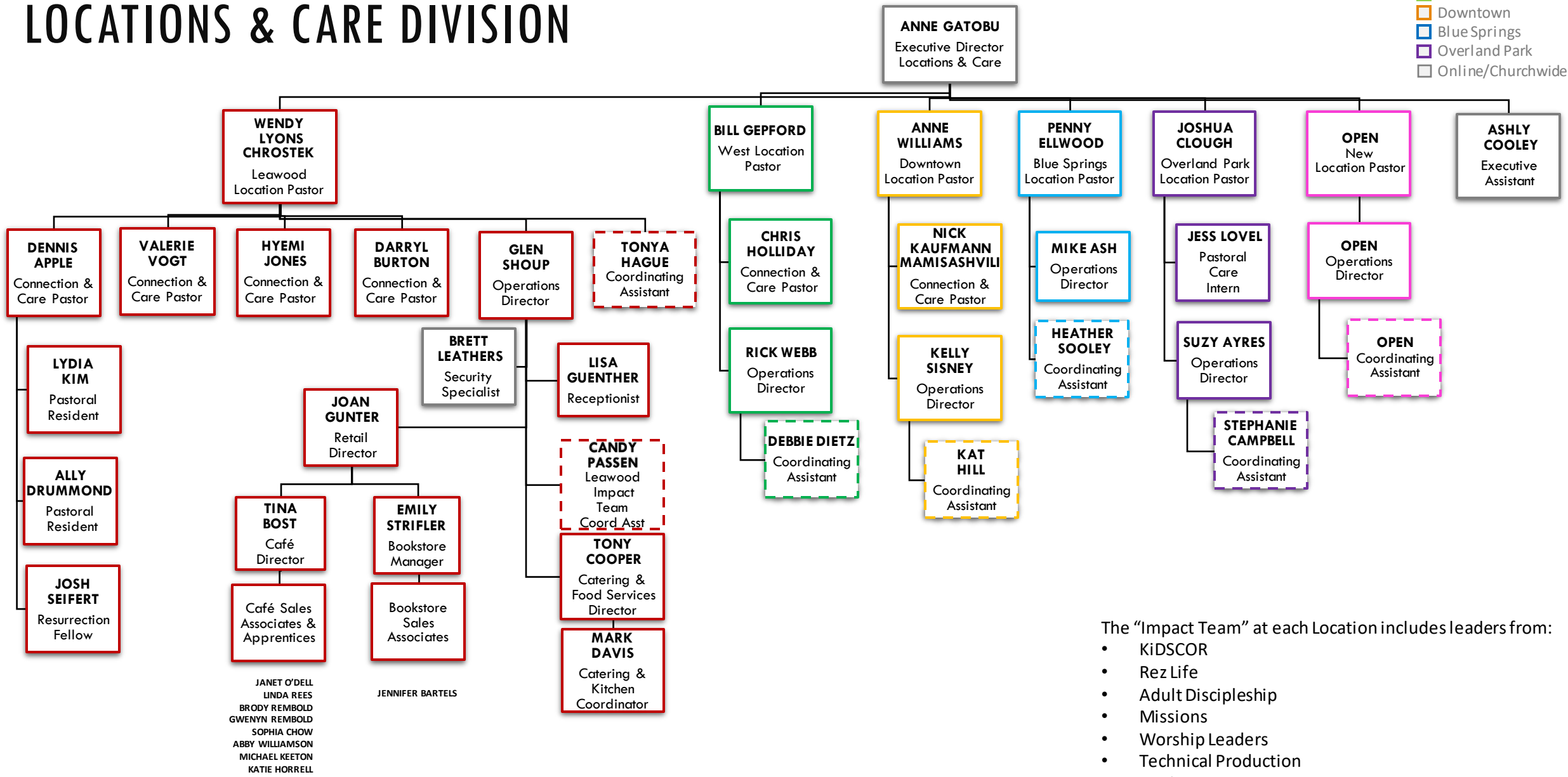
# LOCATIONS & CARE DIVISION CARE CENTRAL

- Leawood
- West
- Downtown
- Blue Springs
- Overland Park
- Online/Churchwide



# LOCATIONS & CARE DIVISION

- Leawood
- West
- Downtown
- Blue Springs
- Overland Park
- Online/Churchwide



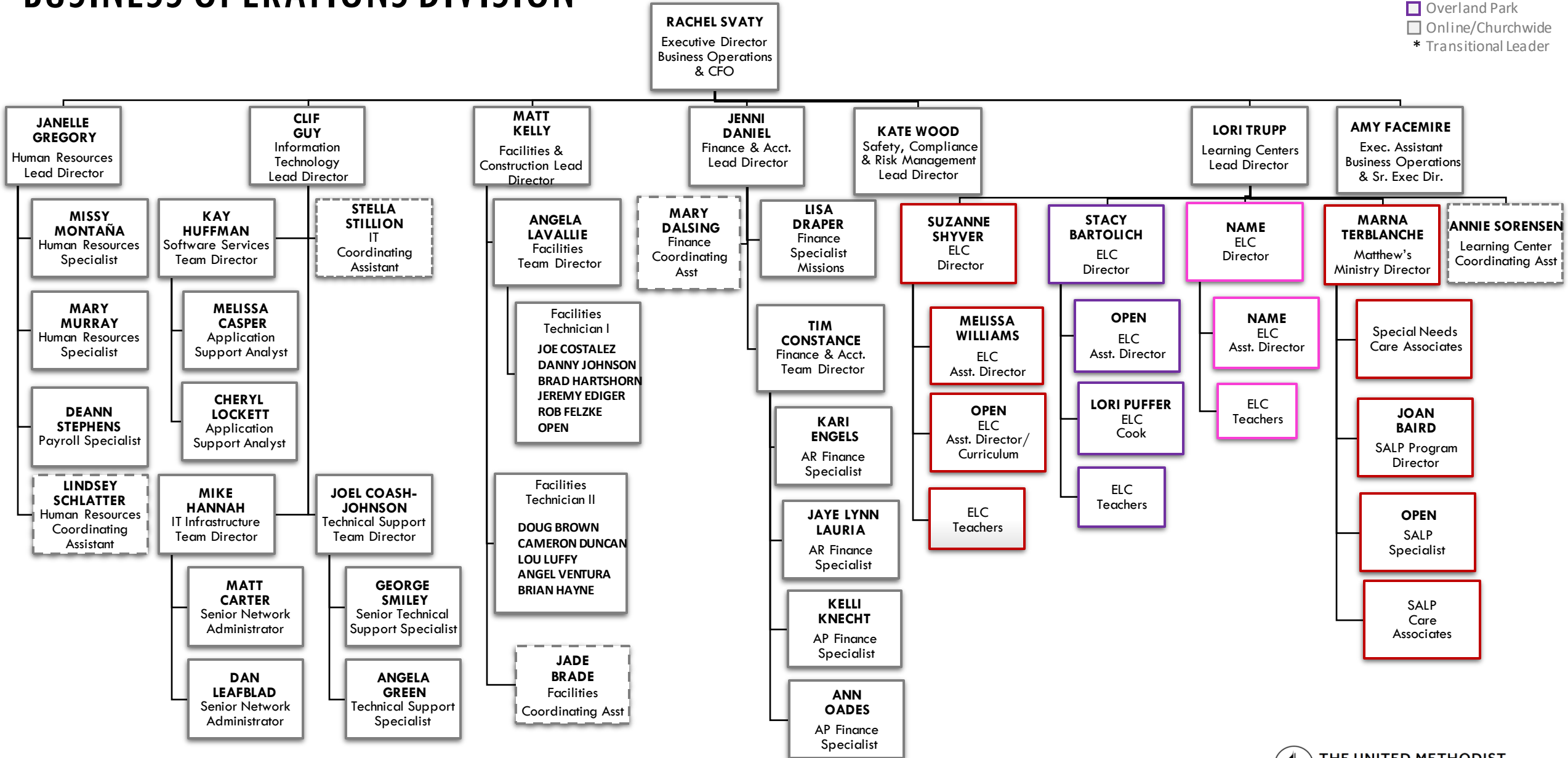
- The "Impact Team" at each Location includes leaders from:
- KiDSCOR
  - Rez Life
  - Adult Discipleship
  - Missions
  - Worship Leaders
  - Technical Production
  - Facilities

JANET O'DELL  
LINDA REES  
BRODY REMBOLD  
GWENYN REMBOLD  
SOPHIA CHOW  
ABBY WILLIAMSON  
MICHAEL KEETON  
KATIE HORRELL

JENNIFER BARTELS

# BUSINESS OPERATIONS DIVISION

- Leewood
- West
- Downtown
- Blue Springs
- Overland Park
- Online/Churchwide
- \* Transitional Leader



# ADMINISTRATIVE PROFESSIONALS

- Leawood
- West
- Downtown
- Blue Springs
- Overland Park
- Online/Churchwide

**STEPHANIE HUBERS**  
Executive Assistant to Sr. Pastor

**JINA LINDSAY**  
Executive Assistant  
Resurrection Exp.

**MICHELLE VARHOLA**  
Executive Assistant  
Ministries & Prog.

**ASHLY COOLEY**  
Executive Assistant  
Locations & Care

**AMY FACEMIRE**  
Executive Assistant Biz.  
Ops. & Sr. Exec Dir.

**ANGELA JACOBS**  
Creative Central  
Coordinating Asst

**DEBBIE COVELL**  
KiDSCOR  
Coordinating Asst

**BRENDA THORNTON**  
KiDSCOR  
Coordinating Asst

**LESA KLEINMANN**  
Care Central  
Coordinating Asst

**TONYA HAGUE**  
Leawood  
Coordinating Asst

**STELLA STILLION**  
Information Tech.  
Coordinating Asst

**LINDSEY SCHLATTER**  
Human Resources  
Coordinating Asst

**LAYNA SHROUT**  
Creative Central  
Coordinating Asst

**MARNI ELLIS**  
Rezlife  
Coordinating Asst

**KARRA KARST**  
Adult Discipleship  
Coordinating Asst

**DEBBIE DIETZ**  
West  
Coordinating Asst

**CANDY PASSEN**  
Coordinating Assistant  
for the Leawood Impact  
Team

**JADE BRADE**  
Facilities Coordinating  
Asst

**MARY DALRING**  
Finance  
Coordinating Asst

**LISA KIRK**  
Missions  
Coordinating Asst

**ANGIE TINDLE**  
Missions  
Coordinating Asst

**KAT HILL**  
Downtown  
Coordinating Asst

**HEATHER SOOLEY**  
Blue Springs  
Coordinating Asst

**ANNIE SORENSEN**  
ELC  
Coordinating Asst

**SARAH LODGE**  
Worship  
Coordinating Asst

**STEPHANIE CAMPBELL**  
Overland Park  
Coordinating Asst

**New Campus**  
Coordinating Asst

# DONOR DEVELOPMENT DIVISION

- Leawood
- West
- Downtown
- Blue Springs
- Overland Park
- Online/Churchwide

